



*Jordan fishwick*

MANCHESTER  
Edgeworth Drive



# Edgeworth Drive, Manchester, M14 6RU

£275,000



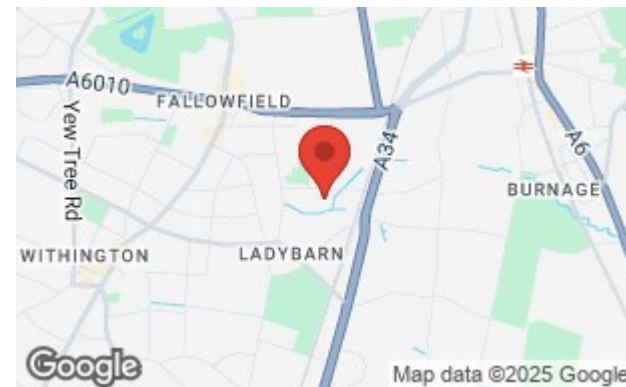
## The Property

A well presented two double bedroom and spacious semi detached property located in Ladybarn which would be ideal for all buyers, especially first time buyers and investors. In brief:- entrance porch and lobby, large lounge with under stairs storage cupboard, fully fitted kitchen with space for a dining table and includes integrated appliances, double patio doors leading through to a large conservatory. To the first floor are two double bedrooms with the front main bedroom housing a fitted wardrobe with sliding doors and the spacious family bathroom with bath and separate shower cubicle. In addition, there is a large enclosed rear garden with two vegetable patches and lockable shed with electricity supply and driveway parking to the front. The property is in a great location only being a 'short stroll' from local transport links to Manchester City Centre & Manchester Airport, and walking/cycle loops to Didsbury Village and West Didsbury's Burton Road.

**\*\*No onward chain\*\***

## Directions

M14 6RU



Google

Map data ©2025 Google

- Two Double Bedrooms
- Large Living Room
- Conservatory
- Renovated Throughout in Recent Years
- Large Rear Garden
- Driveway Parking
- Double Glazed Windows Throughout
- No Onward Chain

Postcode - M14 6RU

EPC Rating - D

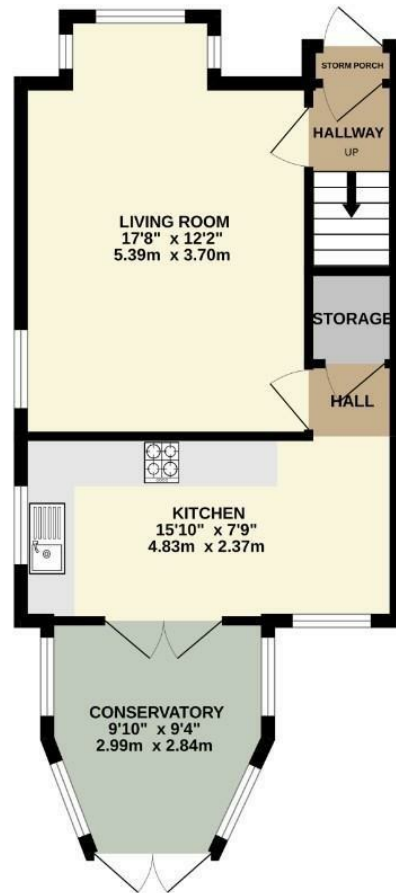
Floor Area - 823.00 sq ft

Local Authority - Manchester City Council

Council Tax - B



GROUND FLOOR  
464 sq.ft. (43.1 sq.m.) approx.



1ST FLOOR  
359 sq.ft. (33.3 sq.m.) approx.



TOTAL FLOOR AREA: 823 sq.ft. (76.4 sq.m.) approx.  
Measurements are approximate. Not to scale. Illustrative purposes only.  
Made with Metropix ©2025



These particulars are believed to be accurate but they are not guaranteed and do not form a contract. Neither Jordan Fishwick nor the vendor or lessor accept any responsibility in respect of these particulars, which are not intended to be statements or representations of fact and any intending purchaser or lessee must satisfy himself by inspection or otherwise as to the correctness of each of the statements contained in these particulars. Any floorplans on this brochure are for illustrative purposes only and are not necessarily to scale.

Offices also at: Wilmslow, Macclesfield, Hale, Sale, Chorlton, Glossop, Manchester & Salford

757-759 Wilmslow Road, Didsbury Village, Manchester

0161 445 4480

didsbury@jordanfishwick.co.uk  
www.jordanfishwick.co.uk